

End-Point Solutions



Top Quality MPEG-2

Video-in-a-Window

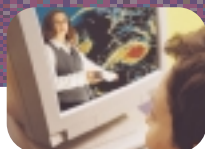
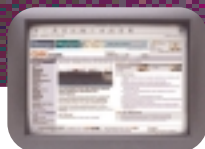
Playback for System

Integrators and OEMs

# VideoPlex™ XPress



# VideoP



**VideoPlex XPress is an MPEG-2 video-in-a-window decoding board designed for integration into desktop clients. Targeted at large scale video networking applications, VideoPlex XPress offers high-quality, cost effective MPEG video hardware acceleration based on the PCI Video Inlay method or the Video Port Extension (VPE - part of the PC 98 recommendations and used in Windows 95, Windows 98 and Windows 2000).**

## Fully Digital

VideoPlex XPress is a true digital component in the PC. It receives MPEG from the PCI bus and produces CCIR-656 streams. These are converted to analog for display via the Composite or S-Video output connectors or transferred through the VPE connector to the VGA card. This technology gives crystal clear images on the VGA.

## Fully Compliant

Optibase DirectShow™ filters have been successfully installed with thousands of VideoPlex XPress boards. VideoPlex XPress benefits from the experience Optibase has gained with COM (Common Object Model) programming and from supporting developers and integrators. And by implementing the VPE recommendations, VideoPlex XPress benefits from wide PC industry support.

## Linux Support

VideoPlex XPress is also supported by a Linux driver, allowing Linux developers to develop Linux based media transmission servers and benefit from Optibase's policy of supporting open standard operating systems. Optibase's Linux Forum is open to all at <http://www.optibase.com/linux>.

# Plex XPRESS

## Network Oriented

VideoPlex XPress features crucial requirements for transmitting MPEG over public networks, such as the ability to:

- Auto-detect and recover from network errors
- Handle underflows / overflows
- Handle clock discrepancies
- Low delay

## Features

- Video-in-a-window and full screen display
- Composite and S-Video outputs
- Video inlay / VPE for digital video transfer to the VGA
- MPEG-1 System, MPEG-2 Program and Transport streams
- Drivers for Windows 95, Windows 98, Windows NT 4.0, Windows 2000 and Linux
- DirectShow in Pull and Push modes
- Supports Full D-1, Half D-1 and SIF resolutions

## Optibase Developer Clubs

Optibase's developer clubs provide system integrators, OEMs and developers with the support and tools needed to develop digital video applications. By subscribing to Optibase's developer clubs, you'll get direct access to Optibase's expertise, helping you cut development cycles and get your product to market sooner.

## Progression

Progression offers the tools needed to develop MPEG digital video applications based on Optibase's encoding and end-point solutions.

Progression subscribers enjoy major benefits including:

- Software tools for developing encoding and decoding solutions based on Optibase hardware.
- A members-only Progression WWW site or online support and access to the latest tools and utilities.
- A periodical CD-ROM with updated software versions and utilities.

## MPEG Commotion Developer Club

The MPEG Commotion Developer Club contains the tools needed to develop video streaming solutions based on Optibase's Video Transmission Servers. MPEG Commotion Developer Club members enjoy major benefits including:

- Tools for developing video streaming and video transmission solutions based on Optibase Video Transmission Server platforms.
- A members-only MPEG Commotion Developers web site for online support and access to the latest tools and utilities.

[http://www.optibase.com/customer\\_clubs](http://www.optibase.com/customer_clubs)

# VideoPlex XPress



## Optibase Ltd. (Headquarters)

7 Shenkar Street  
Herzliya 46120, Israel  
Tel: +972-9-970-9200  
Fax: +972-9-958-6099

## Optibase Inc.

3031 Tisch Way  
Plaza West, Suite 1  
San Jose, CA 95128, USA  
Tel: +1-800-451-5101  
+1-408-260-6760  
Fax: +1-408-244-0545

## Optibase UK

Pew Hill House, Pew Hill  
Chippenham, Wiltshire,  
SN15 1DN, UK  
Tel: +44-1249-460066  
Fax: +44-1249-461066

## Optibase Japan

1-26-6 Ebisu-Nishi  
Shibuya-ku  
Tokyo 150-0021, Japan  
Tel: +81-3-5456-8543  
Fax: +81-3-5456-8541

## Optibase China

Unit 1802, Shanghai Square  
Office Tower  
138 Huai Hai Zhong Road  
Shanghai, P.R.China, 200021  
Tel: 86-21-5351-1494  
Fax: 86-21-5351-1494

## Decoding Specifications

**Standard Compliance:** ISO 11172 (MPEG-1); ISO13818 (MPEG-2)

VideoPlex XPress accepts MPEG System, MPEG Program and MPEG Transport multiplexed files.

### Video

NTSC	Resolution	FPS	PAL	Resolution	FPS
MPEG-2 Full D-1	720x480	29.97	MPEG-2 Full D-1	720x576	25
MPEG-2 Full D-1	704x480	29.97	MPEG-2 Full D-1	704x576	25
MPEG-2 Half D-1	352x480	29.97	MPEG-2 Half D-1	352x576	25
MPEG-1 SIF	352x240	29.97	MPEG-1 SIF	352x288	25

### Audio

MPEG Layer 2

Sampling Frequency: 44.1, 48 kHz

Channels: Mono, Stereo

16/20 bit audio D/A

Software adjustable audio output levels

### Physical Interfaces

- VPE-Video Port Extension (AMC, LBP, and VMI busses compliant to PC 98 specifications)
- Composite video out (BNC) & S-Video out (Mini-DIN)
- Unbalanced stereo analog audio out (3.5 mm mini jack)
- DVD / CD-ROM audio pass through with output to the sound card using soundcard like connectors
- PCI 2.1 compliance

### Physical Size

Half size PCI slot (6.88"x4.2")

### Software

- DirectShow with support for Push and Pull stream delivery models
- Filter automatically detects, de-multiplexes and plays back MPEG clips
- Third party network client support
- Drivers for Windows 95, Windows 98, Windows NT 4.0, Windows 2000 and Linux

### Certifications

CE Class B

FCC Class A

### System Requirements

- Half size PCI slot (a second slot might be required for a new VGA card, depending on the specification of your VGA adapter and PC).
- Pentium II 233 MHz and higher or Pentium 200 MMX and higher
- 32 MB RAM
- A DirectX compliant VGA board with 8 MB RAM
- Windows 95, Windows 98, Windows 2000 or Windows NT 4.0, Service Pack 3 or above